

An Uncertain Future

The monarch butterfly migration is so unique it has been deemed an endangered biological phenomenon. Habitat destruction, both in Mexico and throughout its breeding range in the United States, weather patterns, pesticides and increased use of genetically modified crops have caused the monarch population to plummet to dangerously low numbers.

Please join our energetic effort to restore habitat in order to restore the monarch migration.

History of the Monarch Trail:

The Monarch Trail on the County Grounds in Milwaukee falls along an important migratory flyway for many birds, and for the monarch butterfly in the fall. A rare annual phenomenon occurs on the County Grounds, an overnight roosting site for migrating monarchs. Past years has seen monarchs roosting by the thousands. Since 2006 the numbers of monarchs roosting at this site has declined dramatically. 200 acres has been lost or changed by development. 11 acres has been preserved for the monarchs.

Our trail was created to allow the public access to these roost sites throughout the season and fall migration. Disruption from construction of Innovation Campus, the Zoo Interchange, new roadways and roundabouts has limited the potential for monarchs to migrate through this area in fall and more importantly, does not contain enough meaningful habitat for monarchs to repopulate.



To preserve and restore monarch habitat on this site

Donations are needed!

Donate online at:
www.parkpeoplemke.org
see "Friends groups"

or

make check payable to :

Park People of Milwaukee County
1845 N Farwell Ave.
Milwaukee, WI 53202
Memo: Monarch Trail

To receive emails about upcoming events:
send a request to:
countygroundsmonarchtrail@gmail.com

©2014



Restoring Habitat...



*...Restoring
the Monarch Migration*

A Natural Law:

"Plants (and wildlife) grow in habitats to which they are adapted. If one changes the habitat, one changes the inhabitants."

~Gerould Wilhelm

Located on
the County Grounds in Milwaukee
within Innovation Campus
at Discovery Parkway & Eschweiler Drive

Friends of the Monarch Trail Mission Statement:

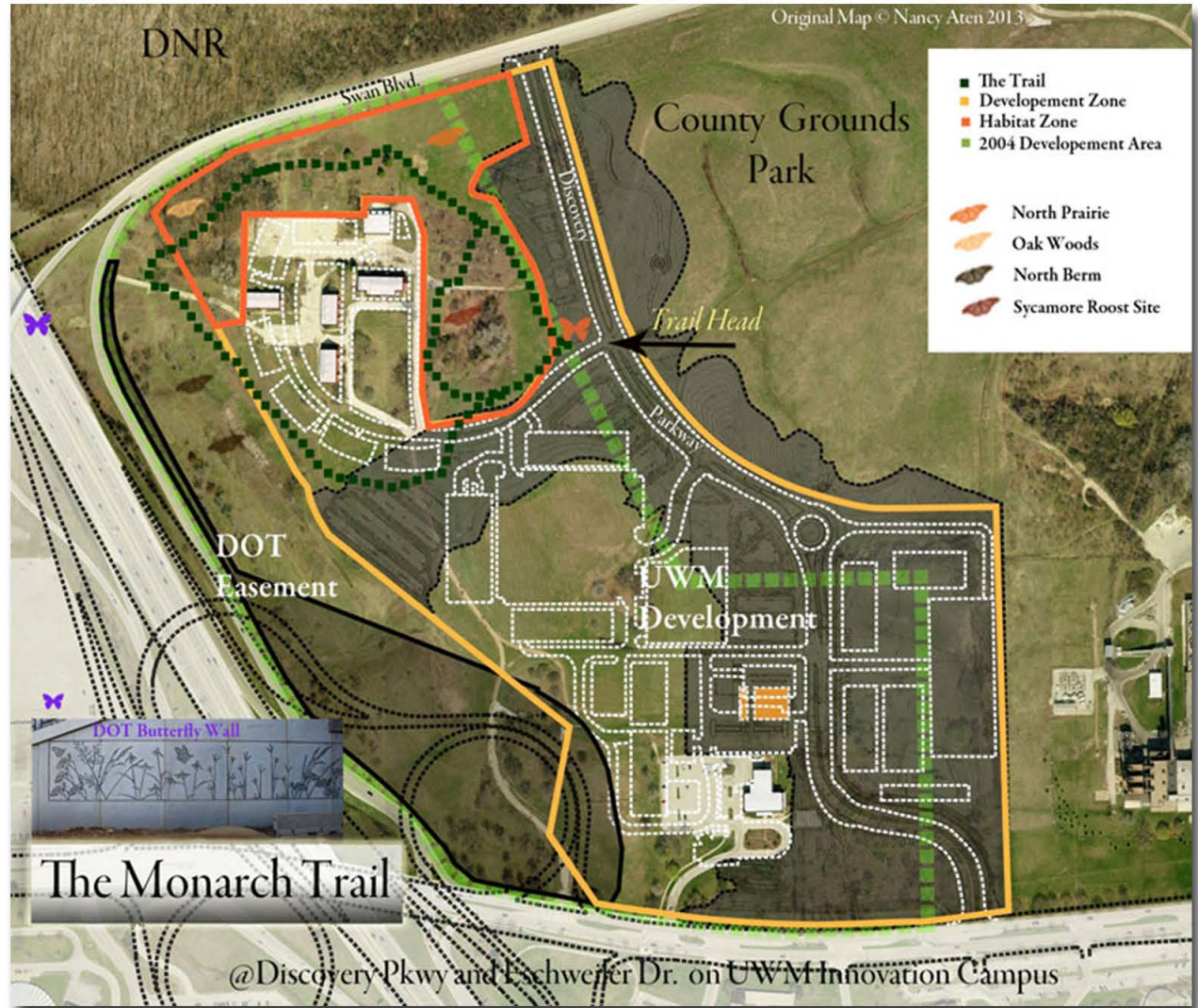
The Friends of the Monarch Trail are a growing and dedicated group of nature enthusiasts who have worked to preserve a portion of the County Grounds specifically for the Monarch Migration. This migratory stopover cannot be moved or replaced and must be retained and enhanced in order for this phenomenon to survive the many development projects on the site.

Current Goals:

- ~To educate the community on the ecosystems and micro-climates required for this amazing journey.
- ~To maintain public access to the migration areas.
- ~To restore the native plant communities that support the monarch migration and all of the unique wildlife that graces this urban treasure.

Long Term Goals:

- ~Engage experts and stakeholders in significant conservation efforts through habitat restoration and management, and education and outreach.
- ~Create student projects intended to better understand butterfly biology and habitat requirements.
- ~Lead citizen-scientist butterfly monitoring networks that generate invaluable data for land managers while connecting kids and adults with local wildlife.



About monarchs:

The monarch butterfly life cycle is consistent with other butterflies, but what makes them so unique is their epic migration. It is considered to be the most astonishing examples of insect migration, flying over 2,500 miles to the oyamel forests in Mexico. No individual butterfly completes the round trip. A complex 4 generation strategy has allowed this essentially tropical butterfly to survive.

We have an opportunity and responsibility to bring experts and stakeholders together to discuss current recovery efforts, potential improvements to existing plans and get more individuals and organizations involved in recovery efforts.